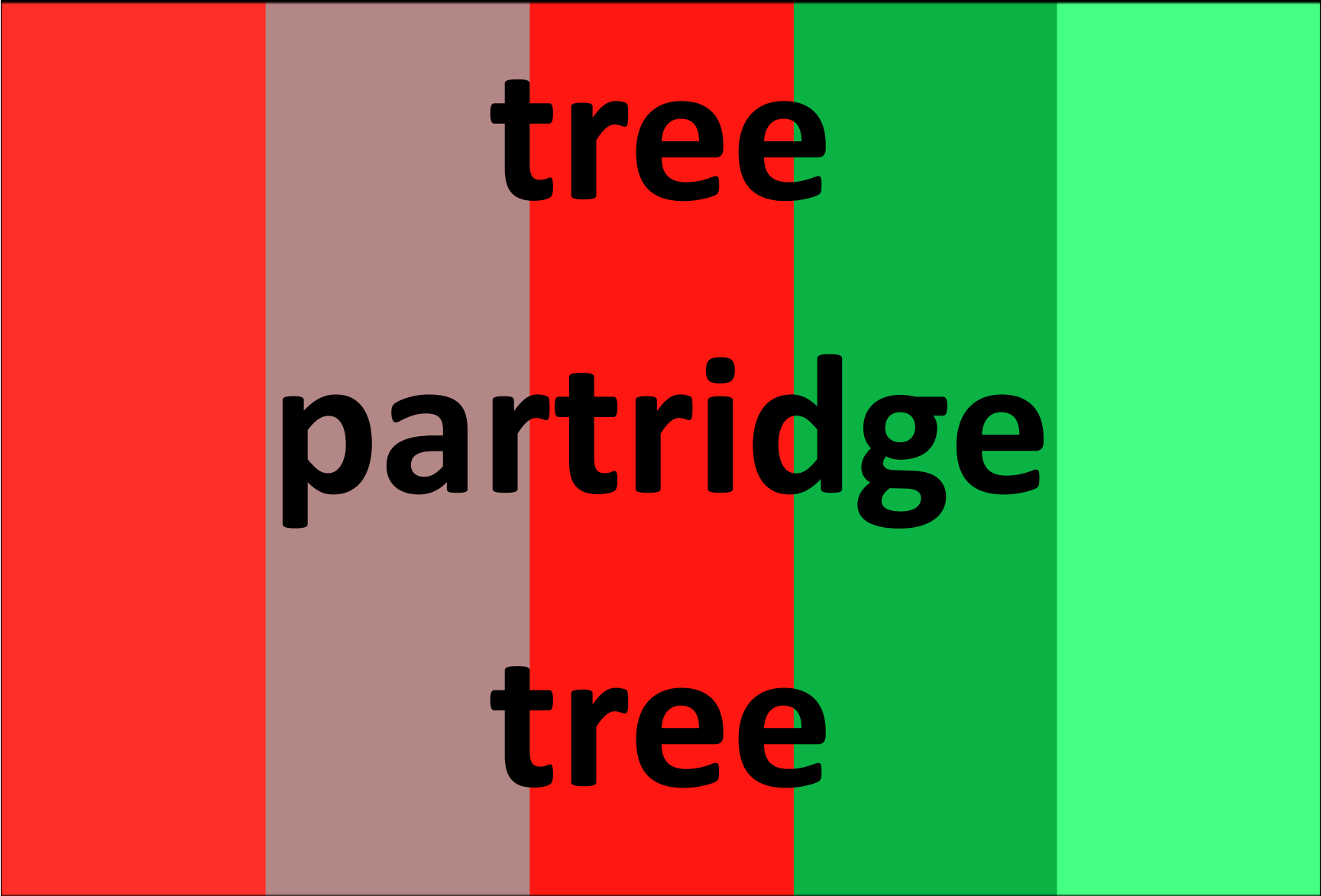


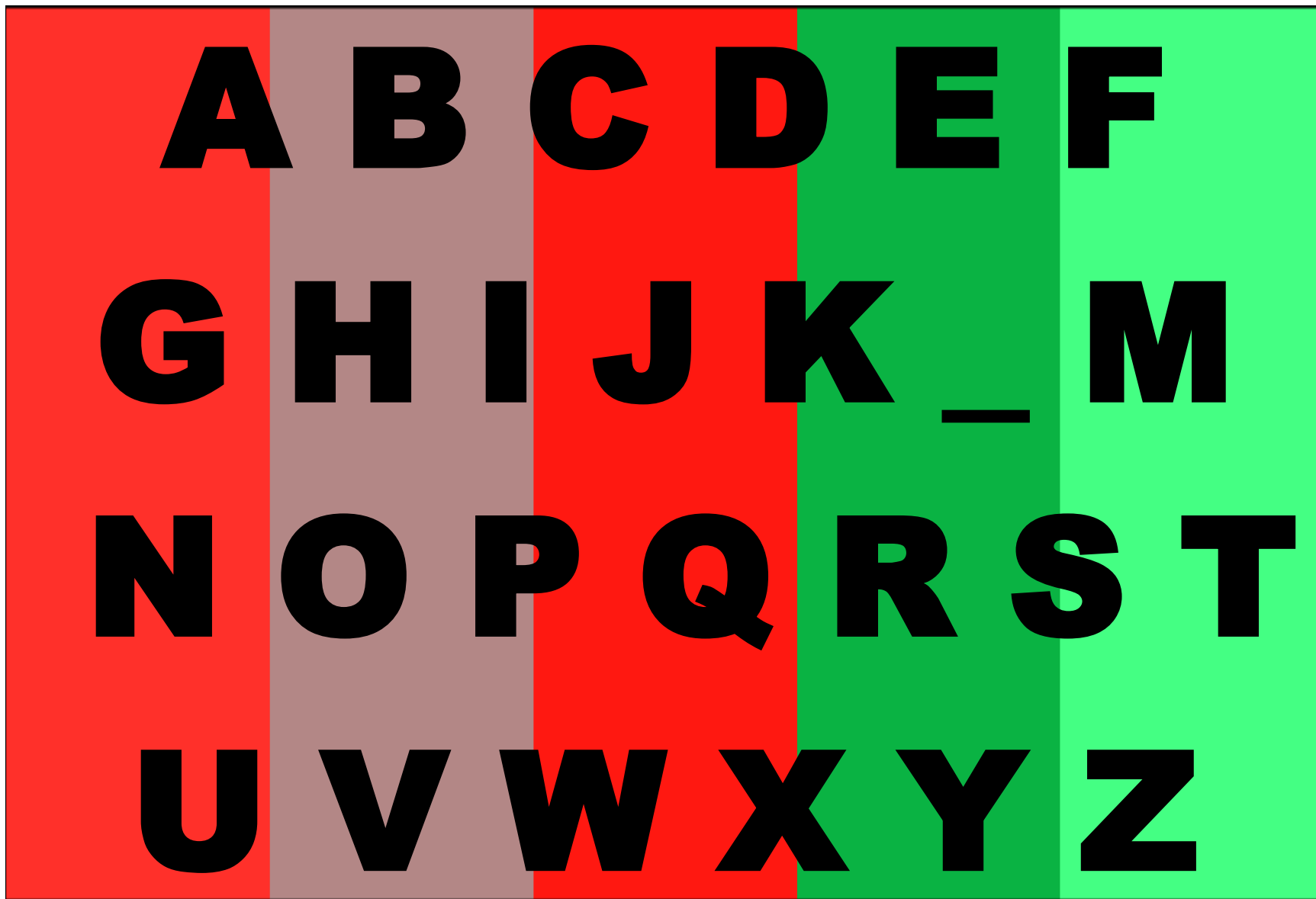
**WINTER**



**knight Christmas**



**tree**  
**partridge**  
**tree**





inning

inning

inning

inning

inning

inning

**inning**

**0**

**10°**

**17°**

**33°**

**8°**

**70°**

**ply ply ply ply ply**

**ply ply ply ply ply**

**ply ply ply ply ply**

**ply ply ply ply ply**

**ply ply ply ply ply**





**UR**

# **School Program**

**d**

**d**

**n**

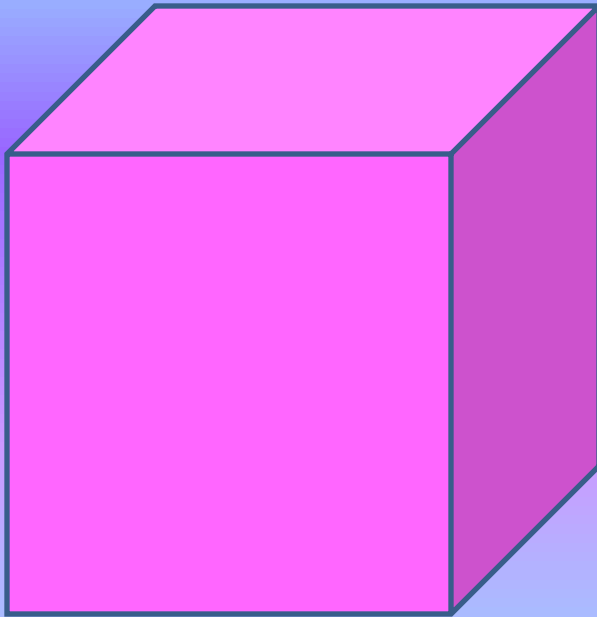
**n**

**a**

**a**

**h**

**h**



# Think

**that**

**that**

**that**

# Challenge

# The

# To

# **Listen**





# P E T S

**gnio**

**your word**

**o**

**u**

**y**

**o**

**u**

**y**

**LLYING**

**tunnel light**

**give**

**give**

**give**

**give**

**+**

**get**

**get**

**get**

**get**

**Go**

**it**

**it**

**it**

**it**

~~cry~~  
m i l k



# A New Leaf

# Answers

Category:	Math	Character	School	Expressions	Holiday Season
100	7 <sup>th</sup> inning stretch	Listen up	after school program	light at the end of the tunnel	winter break
200	5 degrees below 0	Step up to the plate	hands up	forgive and forget	the night before Christmas
300	multiply	going back on your word	think outside the box	Go for it	a partridge in a pear tree
400	odd ball	up to you	that's right	Don't cry over spilled milk	Noel
500	half an hour	the end of bullying	rising to the challenge	Turn over a new leaf	checking it twice

# Sample Wordles

Years old  
Years old  
Years old

**Listen**

The Pain  
Neck

stand  
I